

创轩(常熟)激光科技有限公司

CHANXAN (CHANGSHU) LASER TECHNOLOGY CO.,LTD.

创轩常熟 CHANXAN Changshu

地址: 江苏省常熟市尚湖镇练塘大道180号

Address: No. 180, Liantang Avenue, Shanghu Town, Changshu City, Jiangsu Province, China

电话: +0086-512-6565 1090 Tel(office): +0086-512-6565 1090

Http://www.chanxan.com Http://www.chanxan.cn

苏州创轩激光科技有限公司

SUZHOU CHANXAN LASER TECHNOLOGY CO.,LTD.

创轩苏州 CHANXAN Suzhou

地址: 苏州市吴中经济开发区兴吴路65号

Address: No.65 Xingwu Road,Wuzhong District,Suzhou City, Jiangsu Province,China.

电话: +0086-512-6565 1090 Tel(office): +0086-512-6565 1090

Http://www.chanxan.com Http://www.chanxan.cn

创轩激光越南分公司

Công ty TNHH Laser Chanxan

Ông: WUJU

Điện thoại: +840379551088 +86 18037795118

Mail: chanxan.vn@gmail.com Web: www.chanxan.vn

Địa chỉ: 80A/5 khu phố 4, Phường An Phú, Thành Phố Hồ Chí Minh, Việt Nam

Địa chỉ: Thôn Lịm Xuyên, Xã Song Khê, Thành phố Bắc Giang, Tỉnh Bắc Giang, Việt Nam

海外事业部 Overseas sales department

Contact: Mia

E-mail: mia@chanxan.com

Mob/WA/Wechat: +86 180 1306 1176

Http://www.szchanxan.com

创轩(南京)激光智能科技有限公司

CHANXAN (NANJING) LASER INTELLIGENT TECHNOLOGY CO., LTD.

创轩南京 CHANXAN Nanjing

地址: 南京市高淳区经济开发区东旭路8号

Address: No. 8, Dongxu Road, Economic Development Zone, Gaochun District, Nanjing

电话/传真: +0086-25-5737 6386 Tel/Fax(office): +0086-25-5737 6386

Https://www.chanxanlaser.cn

创轩激光广东分公司

CHANXAN Laser Guangdong Branch

地址: 广东省惠州市惠城区仲恺高新区潼湖镇永平553号2栋/4栋——旭龙产业园区

Address: Building 2/4, No. 553, Yongping, Xulong Industrial Park, Tonghu Town, Zhongkai High-tech Zone, Huicheng District, Huizhou City, Guangdong Province.

创轩激光青岛平度分公司 CHANXAN Laser Qingdao Branch

地址: 山东省青岛市平度市深圳路769号青岛美妆在线新经济产业园12号楼103-105

Address: Room 103-105, Building 12, Qingdao Beauty Online New Economy Industrial Park, 769 Shenzhen Road, Pingdu, Qingdao, Shandong Province.

电话: 18006256025 Tel: +86-180-0625-6025

创轩激光福建分公司 CHANXAN Laser Fujian Branch

地址: 福建省晋江市陈埭镇鹏青路A11幢AT301室

Address: Room AT301, Building A11, Pengqing Road, Chendai Town, Jinjiang City, Fujian Province.

电话: 15262430032 Tel: +86-152-6243-0032

创轩激光湖州分公司 CHANXAN Laser Huzhou Branch

地址: 浙江省湖州市安吉县郑吴镇人民路64号

Address: No. 64 Renmin Road, Zhangwu Town, Anji County, Huzhou City, Zhejiang Province.

联系电话: +86 - 151 9560 0100 +86 - 139 0682 2645

CHANXAN LASER · 创轩激光科技

纺织、服装、鞋材行业 全方位激光解决方案

www.chanxan.com

ALL-ROUND LASER SOLUTIONS FOR TEXTILE, CLOTHING AND SHOE MATERIALS INDUSTRIES

让每一个客户都用好激光机 >>>

Make Sure Every Customer Use Laser Machine Well

全国免费服务热线
400-0177-663



扫一扫, 欢迎关注创轩激光

关于创轩 / About US

创轩激光是一家从事激光技术开发, 推广激光工艺应用的高新技术企业。公司致力于将激光技术推广到各工业生产领域, 并着重专注于研发非金属材料的激光加工工艺及超快激光技术成套设备的开发应用。

公司拥有一支由清华博士后领衔的研发团队。自主研发的CW系列、SG系列、CW/P系列、CX系列激光设备广受用户好评。我们还致力于将激光技术进行跨界融合, 开发了激光加视觉, 激光加自动化等前沿应用并获得完整知识产权。共获取各项国家专利100多项, 著作权6项, 注册商标3项。先后获得国家高新技术企业, 创新型科技企业; 并申报专精特新企业, 瞪羚企业等荣誉称号。

Chanxan Laser Technology Co.,Ltd. is a high-tech enterprise in the development of laser technology and the promotion of laser technology application. The company is committed to promoting laser technology to various industrial production fields, and focuses on the development and application of laser processing technology for non-metallic materials and complete sets of ultrafast laser technology.

The company has a research and development team led by postdoctoral fellows of Tsinghua University. The self-developed CW series, SG series, CW/P series, and CX series laser equipment are widely praised by users. We are also committed to the cross-border integration of laser technology, developed cutting-edge applications such as laser plus vision, laser plus automation, and obtained complete intellectual property rights.



创轩(常熟)工业园

十几年来, 创轩激光产品及服务的客户超8000家, 涉及100多个国家和地区。先后成立创轩苏州、创轩越南、创轩南京、创轩广东、创轩常熟五大基地。建设完成和使用超8万平方米的生产厂房, 基本完成集团化发展格局。

光生万物。我们坚信激光技术所带来的“光加工”时代, 将是建设美好生活的一部分! 创轩人将更加努力创造更尖端的激光设备, 为科研教学、医疗用品、半导体、超快精密加工、新能源、新材料, 脆性材料, 汽配, 工艺品, 智能家居, 柔性面料等领域的工业生产和工艺提升贡献一份力量。

For more than ten years, Chanxan Laser products and services have served more than 8,000 customers, involving more than 100 countries and regions. Five bases of Chanxan Suzhou, Chanxan Vietnam, Chanxan Nanjing, Chanxan Guangdong, and Chanxan Changshu have been established successively. The construction and use of over 80,000 square meters of production plants have basically completed the group development pattern.

Light produces all things. We firmly believe that the era of "light processing" brought by laser technology will be part of building a better life! Chanxan people will work harder to create more cutting-edge laser equipment for industrial production and process improvement in the fields of scientific research and teaching, medical supplies, semiconductors, ultra-fast precision processing, new energy, new materials, brittle material, auto parts, handicrafts, smart home, flexible fabrics, etc. to make a contribution.

➤ 我们的使命: 让每一个客户都用好激光机!
Our mission: Make Sure Every Customer Use Laser Machine Well!

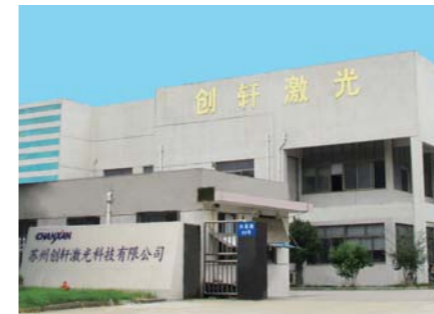
创轩激光五大基地 / Chanxan Laser Five Bases



常熟 Changshu



南京 Nanjing



苏州 Suzhou



广东 Guangdong



越南 Vietnam

创轩发展历程 / Development history

- 2009**

 - 第一台激光切割机完成, 主要用于服装业打样和工艺开发。该产品应用于多个领域, 时至今日, 仍保持较高水准。
 - The first laser cutting machine was promoted to the market, mainly used in the apparel industry. The products are used in many fields and still maintain a high technology level today.

- 2010**

 - 激光切割机及工艺深受苏州服装行业认可, 取得苏州市场领先地位。
 - Laser cutting machines are well recognized in garment industry, and occupied the leading position in Suzhou market.

- 2011**

 - CW激光切割系列全年销售收入突破500万, 取得CO₂切割机华东地区市场领先地位。
 - The annual revenue of CW series exceeded 5 million, achieving the leading position in the East of China market.

- 2012**

 - 激光品牌“创轩”获准注册。完善创轩激光CW系列切割机, 产品从开发、生产、销售一条龙服务成功。
 - 创轩激光进军工艺品行业, 设立浙江安吉办事处。
 - Laser brand "Chanxan" was approved for registration. CW series product development, production and sales one-stop service successfully achieved.
 - Chanxan Laser entered the handicraft industry and established an office in Anji, Zhejiang.

- 2013**

 - 创轩外贸部成立, 叩开国际市场大门, 产品及服务延伸到海外, 开启创轩激光的世界之旅。
 - 研发生产高精度射频管CO₂切割机, 公司在高端精密加工领域的创新开启。
 - Chanxan foreign trade department was established, which opened the door to the international market, sales and service all over the world.
 - Product high-precision RF tube CO₂ cutting machine, enter into high-end precision processing markets.

- 2014**

 - 第一条完全定制化的激光切割流水线加装应用交付上海客户, 成功解决客户十几年生产难题。
 - 创轩激光是首个将CO₂光纤传导技术成功应用到成型设备, 带来相关领域的革命性突破。
 - The first fully customized laser cutting assembly line was installed and applied to the Shanghai customer, successfully solving the customer's more than ten-year production problem.
 - Chanxan Laser is the first one who successfully applied CO₂ fiber optic transmission technology to industrial equipment, bringing revolutionary breakthroughs in related fields.

- 2015**

 - 流水线打标机、按需定制激光设备等新型激光应用大范围推广, 推动了激光技术在相关产业的推广和应用。
 - 第一台光纤金属切割机实现销售突破。
 - The large-scale promotion of new laser applications such as assembly line marking machines and customized laser equipment on demand.
 - Sold the first fiber laser cutting machine.

- 2016**

 - 创轩激光累计获得30多项专利授权。• 创轩激光荣获三项“高新技术产品”认定。• 创轩激光荣获“江苏省民营科技企业”称号。
 - Chanxan Laser has accumulated more than 30 patent authorizations. • Chanxan Laser was awarded three "high-tech products" certification.
 - Chanxan Laser was awarded the title of "Private Technology Enterprise in Jiangsu Province".

- 2017**

 - 创轩激光越南分公司成立, 国际市场占比不断提高。• 创轩激光荣获“国家高新技术企业”荣誉称号。
 - Vietnam Branch of Chanxan Laser was established, and its international market share continued to increase.
 - Chanxan Laser won the honorary title of "National High-tech Enterprise".

- 2018**

 - 创轩激光各办事处及分公司扩大至十多处, 总员工人数突破100人。
 - Chanxan laser' offices and branches has expanded to more than ten, and the total number of employees has exceeded to 100.

- 2019**

 - 创轩激光各类专利申请突破100项。• 成立非标事业部, 并建立无尘实验室。
 - Chanxan Laser has applied for over 100 various patents. • Establish a non-standard business department and a dust-free laboratory.

- 2020**

 - 成立南京创轩激光智能科技有限公司。
 - In 2020, Nanjing Chanxan Laser Intelligent Technology Co., Ltd. was established.

- 2021**

 - 成立创轩激光广东分公司。
 - In 2021, Chanxan Laser Guangdong Branch was established.

- 2022**

 - 建成共计66000平方米的生产基地, 完成近3亿人民币的对外投资。
 - In 2022, a total of 66,000 square meters of production base will be built, and nearly 300 million yuan of foreign investment will be completed.

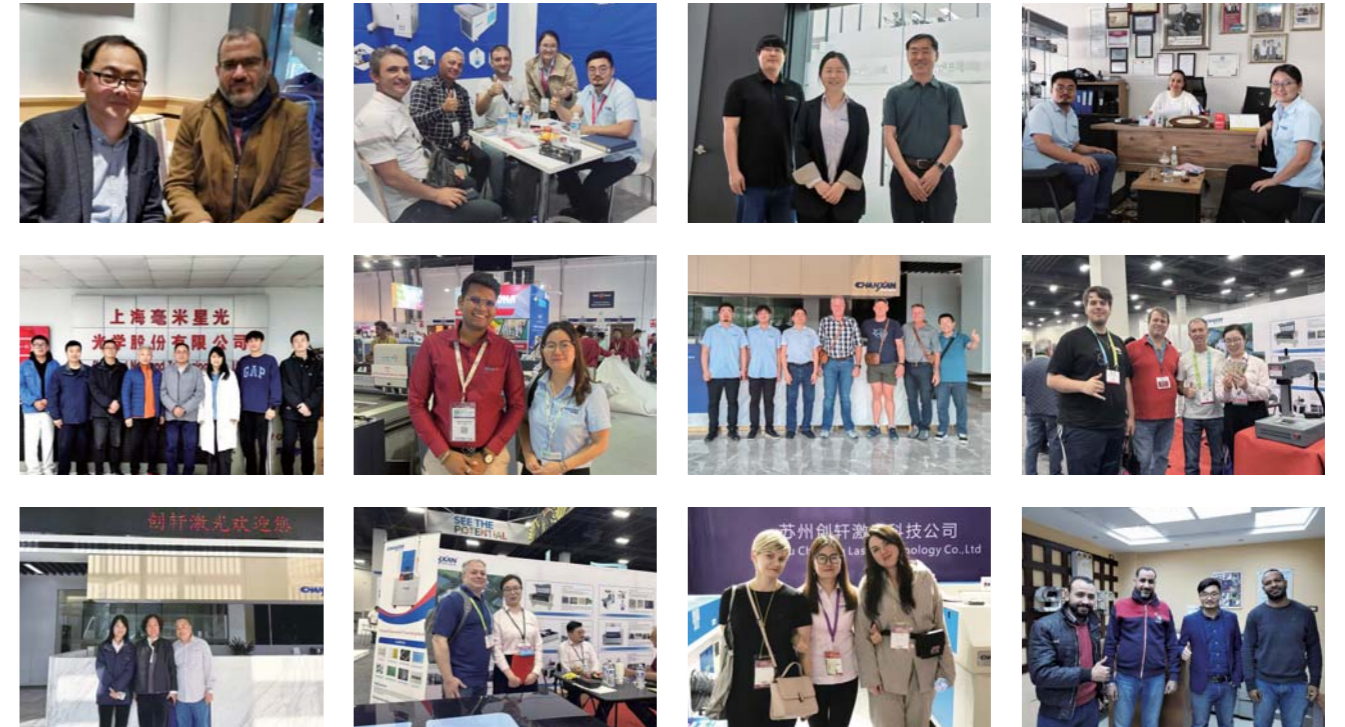
- 2023**

 - 入驻新总部。创轩苏州、创轩常熟、创轩南京、创轩广东、创轩越南五大基地扩大和投产运营, 基本形成集团化发展格局。
 - In 2023, settled in the new headquarters, five bases of Chanxan Suzhou, Chanxan Changshu, Chanxan Nanjing, Chanxan Guangdong, and Chanxan Vietnam will be expanded and put into operation, basically forming a group development pattern.

- 2024**

 - 立项飞秒级超快激光项目, 瞄准半导体、新能源领域。
 - The femtosecond ultrafast laser project was launched, targeting the semiconductor and new energy fields.

客户风采 / Customers Show



展会风采 / Exhibition Show



高速双梁异步大视觉自动送料激光切割机

High-Speed Asynchronous Large-Field Vision Laser Cutting Machine



CW-2030HFSS

应用领域 / Applicable Fields

大幅面印花面料, 自动识别切割特殊复杂图案, 精准切割刺绣、商标等纺织品。
Large format printing fabrics, automatic identification of cutting the special and complex design cutting, accurate cutting textile such as embroidery and trade mark and etc.

设备优势 / Equipment Advantages

1. 适用于大幅面切割、雕刻。
 2. 自动送料系统使操作简便快捷, 同时节省人力成本。
 3. 采用稳固的工作底盘, 确保工作平稳精准。
 4. 气缸式导轨确保输送平稳快速, 节省时间, 精密齿轮传动确保输送精度高。
 5. 激光管与激光头同步运动, 缩短激光路径, 降低激光衰减, 确保高效切割, 同时节省能源。
 6. 吹排风系统可有效去除切割过程中产生的粉尘和烟雾, 避免火灾, 保护材料。
 7. 可根据客户要求定制工作尺寸。
1. Really useful in cutting, engraving on large format.
 2. Auto feeding system make the operation easy and quick, at the same time, save the human cost.
 3. Adopt stable working chassis, make sure the working steady and accurate.
 4. Cylinder type guide make sure the transportation smoothly and fast, to save time, and the transportation of accurate gear to achieve high precision.
 5. The synchronous movement of laser tube and laser head, shorten laser path, decrease the laser attenuation, to ensure cutting effectively and at the same time save the energy.
 6. The blowing and exhaust system dispose the dust and smoke during cutting, avoid the fire then protect the material.
 7. The working format can be made according to customer's request.

技术参数 / Technical Parameters

型号	CW-2030HFSS
工作幅面	2000*3000mm
激光功率	300W
激光类型	CO ₂ 玻璃管
切割速度	0~900mm/s
定位精度	≤0.02mm
冷却系统	水冷系统
整机功率	8000W
控制系统	创轩专业激光智能识别切割系统
镜片	美国品牌镜片
相机类型	工业高清相机
支持图形格式	DST/PLT/BMP/DXF/DWG/AI/LAS
支持软件	TAJIMA,CORELDRAW,PHOTOSHOP,AUTOCAD
驱动系统	伺服电机及齿轮齿条驱动系统
配件	排风机及排烟管
工作电压	220V±10%, 50Hz(60Hz)
工作环境	温度: 1~45°C, 湿度: 5~95%
整机重量	1100KG

Model	CW-2030HFSS
Working area	2000*3000mm
Laser power	300W
Laser type	CO ₂ laser glass tube
Cuttng speed	0~900mm/s
Reposition accuracy	≤0.02mm
Cooling system	Water cooling system
Whole machine power	8000W
Control system	Chanxan professional laser intelligent identification system
Lens	American brand laser lens
Camera type	Industrial HD Camera
Graphic format supported	DST/PLT/BMP/DXF/DWG/AI/LAS
Software supported	TAJIMA,CORELDRAW,PHOTOSHOP,AUTOCAD
Drive system	Servo moto and gear system
Accessories	Exhaust fan and pipe
Working voltage	220V±10%, 50Hz(60Hz)
Working condition	Temperature: 1~45°C, Humidity: 5~95%
Machine weight	1100KG

样品展示 / Sample show



视觉定位激光切割机

CCD Camera Laser Cutting Machine



CW-1814HFSS



CW-960S

应用领域 / Applicable Fields

大面积印花面料准确裁切, 异形及复杂图案的自动识别切割, 绣花、商标织唛等纺织工艺的精准切割; 广告喷绘、写真布等定位切割。

Accurate cutting for large-size printed fabrics; automatic recognizing and cutting of irregular shapes and complex patterns; precise cutting of embroidery designs and woven labels; positioning and cutting of printed materials etc.

设备优势 / Equipment Advantages

1. 软件识别图形轮廓, 自动生成切割路径并完成切割。避免了用户因为定位不准确造成的材料及时间的浪费。
2. 支持设置相机标定偏移补偿, 修正识别在设备运行一段时间后出现的整体偏移, 确保图形切割准确。
3. 采用余量控制方式, 用传感器探头探测布料余量的长短, 自动开启和关闭送料电机, 达到布料的自由无拉伸输送。
4. 高像素抓取图形, 最大识别区域可达4平方米。

1. The software recognizes the contour of the graphic, automatically generates the cutting path and completes the cutting. The waste of materials and time caused by inaccurate positioning is avoided.
2. Machine supports camera calibration compensation, and corrects the overall offset that occurs after the device has been running for a period of time to ensure accurate contour cutting.
3. The Residual Amount Control System is used to detect the length of the cloth balance by the sensor probe, and the feeding motor is automatically turned on and off to achieve the free and non-stretching conveyance of the cloth.
4. High pixel capture graphics with a maximum recognition area of up to 4 square meters.

技术参数 / Technical Parameters

型号	CW-1814HFSS
工作面积	1750*1250mm
激光功率	80W~300W 可选
激光类型	CO ₂ 玻璃管
镜片	美国品牌镜片
冷却类型	水冷系统
雕刻扫描速度	0~1000mm/s
切割速度	0~600mm/s
激光能量控制	0~100%软件设定
相机品牌	工业高清相机
定位精度	≤ ±0.02mm
控制软件	创轩专业激光智能识别切割系统
支持图形格式	DST/PLT/BMP/DXF/DWG/AI/LAS等
支持软件	TAJIMA,CORELDRAW,PHOTOSHOP,AUTOCAD等
整机重量	900KG
驱动系统	步进电机及皮带驱动系统
辅助装置	排风机及排烟管
工作电压	220V±10%, 50Hz(60Hz)
工作环境	温度:1~45°C, 湿度:5~95%
整机功率	3500W

Model	CW-1814HFSS
Working area	1750*1250mm
Laser power	80W~300W optional
Laser type	CO ₂ glass tube
Lens	American brand lens
Cooling type	Water cooling system
Carving scanning speed	0~1000mm/s
Cutting speed	0~600mm/s
Laser power control	0~100% by software
Camera brand	Industrial HD Camera
Positioning accuracy	≤ ±0.02mm
Control system	Chanxan professional laser intelligent identification system
Graphic format supported	DST/PLT/BMP/DXF/DWG/AI/LAS
Software supported	TAJIMA/CORELDRAW/PHOTOSHOP/AUTOCAD AND ETC
Machine weight	900KG
Drive system	Stepper motor and belt drive system
Accessories	Exhaust fan and pipe
Working voltage	220V±10%, 50Hz(60Hz)
Working condition	Temperature:1~45°C, Humidity:5~95%
Whole power	3500W

样品展示 / Sample show



视觉飞行振镜激光切割机

Top Vision Flying Galvo Laser Cutting Machine



CW/X-1814FSS

应用领域 / Applicable Fields

柔性/薄型材料(布料、皮革、纸张)的连续高速切割;复杂图形(镂空花纹、细小文字)的精密加工等。
 Application areas: Continuous high-speed cutting of flexible/thin materials (cloth, leather, paper); precision processing of complex graphics (hollow patterns, small text) etc.

设备优势 / Equipment Advantages

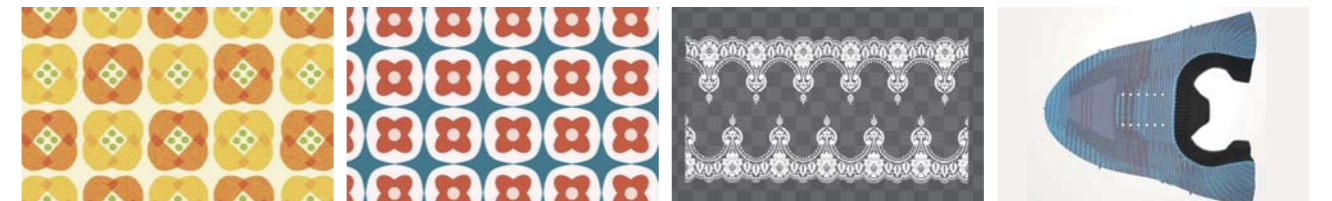
1. 软件识别图形轮廓, 自动生成切割路径并完成切割。避免了用户因为定位 不准确造成的材料及时间的浪费。
 2. 支持设置相机标定偏移补偿, 修正识别在设备运行一段时间后出现的整体偏移, 确保图形切割准确。
 3. 采用余量控制方式, 用传感器探头探测布料余量的长短, 自动开启和关闭送料电机, 达到布料的自由无拉伸输送。
 4. 高像素抓取图形, 最大识别区域可达4平方米。
 5. 比传统机械式XY平台移动快数倍至数十倍, 大幅缩短切割时间。
1. The software recognizes the outline of the graphic, automatically generates the cutting path and completes the cutting. It avoids the waste of materials and time caused by inaccurate positioning.
 2. Supports setting camera calibration offset compensation, corrects and identifies the overall offset that occurs after the equipment has been running for a period of time, and ensures accurate graphic cutting.
 3. Adopts the margin control method, uses the sensor probe to detect the length of the fabric margin, automatically turns on and off the feeding motor, and achieves free and non-stretching conveying of the fabric.
 4. High-pixel capture graphics, the maximum recognition area can reach 4 square meters.
 5. It moves several to dozens of times faster than the traditional mechanical XY platform, greatly shortening the cutting time.

技术参数 / Technical Parameters

型号	CW/X-1814FSS
工作幅面	1700*1200mm
激光功率	80~300W可选
激光类型	CO ₂ 玻璃激光管/CO ₂ 射频金属激光管(可选)
激光能量控制	0~100%软件设定
振镜加工速度	0~8000mm/s
切割速度	0~800mm/s
冷却系统	水冷系统
整机功率	3000W
控制系统	创轩专业激光智能识别切割系统
相机类型	工业高清相机
支持图形格式	DST/PLT/BMP/DXF/DWG/AI/LAS
支持软件	TAJIMA,CORELDRAW,PHOTOSHOP,AUTOCAD
驱动系统	伺服电机及模组
配件	排风机及排烟管
工作电压	220V±10%, 50Hz(60Hz)
工作环境	温度:1~45°C, 湿度:5~95%
整机重量	800KG

Model	CW/X-1814FSS
Working area	1700*1200mm
Laser power	80~300W optional
Laser type	CO ₂ laser glass tube/CO ₂ RF metal laser tube (optional)
Laser energy control	0~100% software setting
Galvanometer processing speed	0~8000mm/s
Cuttng speed	0~800mm/s
Cooling system	Water cooling system
Whole machine power	3000W
Control system	Chanxan professional laser intelligent identification system
Camera type	Industrial HD Camera
Graphic format supported	DST/PLT/BMP/DXF/DWG/AI/LAS
Software supported	TAJIMA,CORELDRAW,PHOTOSHOP,AUTOCAD
Drive system	Servo motor and module
Accessories	Exhaust fan and pipe
Working voltage	220V±10%, 50Hz(60Hz)
Working condition	Temperature: 1~45°C, Humidity: 5~95%
Machine weight	800KG

样品展示 / Sample show



二氧化碳激光切割机

CO₂ Laser Cutting Machine



SG-1390



CW-960UD



CW-1610T



CW-1610TF

应用领域 / Applicable Fields

适用材料: 皮革、布料、橡胶、竹木、包、服装、鞋、玩具和箱包等雕刻和切割。

适用行业: 本类机械用于商标织唛、服装皮革、布制玩具、电脑绣花裁剪、牛仔制衣、刺绣家纺、模板切割和纸制品的切割。

Applicable materials: engraving and cutting of leather, fabrics, rubber, bamboo, bags, apparels, shoes, toys and bags.

Applicable industries: woven labels, badges, fabrics, leather, toys, embroidery design cutting, denim garments, embroidery home textiles, mould and paper products cutting

设备优势 / Equipment Advantages

1. 独家工艺研发, 避免切割边缘熏黄熏黑传统激光切割的问题。
2. 新款机型配备横梁保护装置、模组导轨装置、高速伺服电机。
3. 快速曲线切割功能: 任意曲线均能快速连续切割。
4. 具备功率、频率与速度跟随功能, 有效减少拐角切边毛刺; 转角能量跟随技术, 使尖角切割技术更完美。
5. 可根据需要在软件设计路径优化方案, 缩短加工时间, 提高效率。
6. 可根据需求或行业增配摄像头, 不锈钢底板等部件; 提升工艺或效率。

1. Exclusive process development to avoid the problem of traditional laser cutting with yellow or dark edge.
2. The new model is equipped with beam protection device, modular guide rail device, and high-speed servo motor.
3. Fast curve cutting function. Any curve can be cut continuously in rapid succession.
4. With power, frequency and speed following function, it effectively reduces corner burrs; corner energy following technology makes sharp angle cutting technology more perfect.
5. The software design path can be optimized as needed to reduce processing time and improve efficiency.
6. CCD cameras, stainless steel baseboard or other parts could be added to meet the requirements and improve the efficiency.

技术参数 / Technical Parameters

型号	SG-1390	CW-1610T	CW-1610TF
加工面积	1300*900mm	1600*1000mm	1600*1000mm
激光功率	80W~300W 可选	80W~300W 可选	80W~300W 可选
激光类型	CO ₂ 玻璃管	CO ₂ 玻璃管	CO ₂ 玻璃管
切割速度	0~600mm/s	0~600mm/s	0~600mm/s
雕刻速度	0~1000mm/s	0~1000mm/s	0~1000mm/s
定位精度	<±0.02mm	<±0.02mm	<±0.02mm
支持格式	DXF/PLT/BMP/AI/HML/DST	DXF/PLT/BMP/AI/HML/DST	DXF/PLT/BMP/AI/HML/DST
工作电压	220±10%, 50Hz(60Hz)	220±10%, 50Hz(60Hz)	220±10%, 50Hz(60Hz)
冷却系统	水冷系统	水冷系统	水冷系统
整机功率	2000W	3000W	3000W
重量	500KG	600KG	700KG
工作温度	1°C~45°C	1°C~45°C	1°C~45°C
工作湿度	5%~95% 无凝水	5%~95% 无凝水	5%~95% 无凝水

型号	SG-1390	CW-1610T	CW-1610TF
Process area	1300*900mm	1600*1000mm	1800*1000mm
Laser power	80W~300W optional	80W~300W optional	80W~300W optional
Laser type	CO ₂ laser glass tube	CO ₂ laser glass tube	CO ₂ laser glass tube
Cutting speed	0~600mm/s	0~600mm/s	0~600mm/s
Engraver speed	0~1000mm/s	0~1000mm/s	0~1000mm/s
positioning accuracy	<±0.02mm	<±0.02mm	<±0.02mm
Supported formats	DXF/PLT/BMP/AI/HML/DST	DXF/PLT/BMP/AI/HML/DST	DXF/PLT/BMP/AI/HML/DST
Working voltage	220V±10%, 50Hz(60Hz)	220V±10%, 50Hz(60Hz)	220V±10%, 50Hz(60Hz)
Cooling system	Water cooling system	Water cooling system	Water cooling system
Whole power	2000W	3000W	3000W
Net weight	500KG	600KG	700KG
Work temperature	1°C~45°C	1°C~45°C	1°C~45°C
Working humidity	5%~95%	5%~95%	5%~95%

样品展示 / Sample show



飞行振镜激光切割机

Flying Galvo Laser Cutting Machine



CW/X-1414

应用领域 / Applicable Fields

纺织品(天然和技术织物)、牛仔布、皮革、PU、木材、丙烯酸、PMMA、纸、纸板、乙烯基、EVA、橡胶、塑料和其他非金属材料等的切割雕刻打孔。

Applications: Cutting, engraving and punching of textiles (natural and technical fabrics), denim, leather, PU, wood, acrylic, PMMA, paper, cardboard, vinyl, EVA, rubber, plastic and other non-metallic materials.

设备优势 / Equipment Advantages

1. 支持动态跟随切割, 材料在连续运动过程中完成加工, 无停顿, 大幅提升生产效率。
2. 配备专业激光控制软件, 智能系统全自动校正光路, 支持自动路径优化和实时能量调节, 操作便捷灵活。
3. 采用动态振镜扫描+飞行光路+精密运动控制技术, 实现整幅面全飞行切割, 大幅面无缝拼接技术, 确保整个加工区域的一致性。
4. 采用优质光学元件和高刚性机械结构设计确保设备在长时间连续运行下仍保持卓越的加工精度和稳定性。

1. Support dynamic follow-up cutting, the material is processed in the process of continuous movement without pause, greatly improving production efficiency.
2. Equipped with professional laser control software, the intelligent system automatically corrects the optical path, supports automatic path optimization and real-time energy adjustment, and is convenient and flexible to operate.
3. Adopt dynamic galvanometer scanning + flying optical path + precision motion control technology to achieve full-scale flying cutting, large-scale seamless splicing technology, and ensure the consistency of the entire processing area.
4. The use of high-quality optical components and high-rigidity mechanical structure design ensures that the equipment still maintains excellent processing accuracy and stability under long-term continuous operation.

技术参数 / Technical Parameters

型号	CW/X-1414
工作幅面	1300*1300mm
激光功率	80~300W可选
整机功率	2000W
激光类型	CO ₂ 玻璃激光管/CO ₂ 射频金属激光管(可选)
冷却类型	水冷系统
振镜加工速度	0~8000mm/s
切割速度	0~800mm/s
激光能量控制	0~100%软件设定
控制软件	创轩专业激光智能系统
支持图形格式	DST/PLT/BMP/DXF/DWG/AI/LAS等
支持软件	TAJIMA,CORELDRAW,PHOTOSHOP,AUTOCAD等
整机重量	500KG
驱动系统	伺服电机及模组传动系统
辅助装置	排风机及排烟管
工作电压	220V±10%, 50HZ(60HZ)
工作环境	温度:1~45°C, 湿度:5~95%

Model	CW/X-1414
Working area	1300*1300mm
Laser power	80~300W (optional)
Whole machine power	2000W
Laser type	CO ₂ glass laser tube/CO ₂ RF metal laser tube (optional)
Cooling type	Water cooling
Galvo processing speed	0~8000mm/s
Cutting speed	0~800mm/s
Laser power control	0~100% by software
Control system	Chanxan professional laser intelligent system
Graphic format supported	DST/PLT/BMP/DXF/DWG/AI/LAS
Software supported	TAJIMA,CORELDRAW,PHOTOSHOP,AUTOCAD AND ETC
Machine weight	500KG
Drive system	Servo motor and module drive system
Accessories	Exhaust fan and pipe
Working voltage	220V±10%, 50HZ(60HZ)
Working condition	Temperature: 1~45°C, humidity: 5~95%

样品展示 / Sample show



智能视觉识别高速激光打标机

Smart CCD Laser Marking Machine



CX-150SV

应用领域 / Applicable Fields

可用于各类服装面料、皮革材料的切割、打孔、雕刻，如：鞋面皮革穿孔镂空、健身服穿孔、球衣穿孔、夹克穿孔、运动服面料雕刻、刻字膜切割及其他柔性材料穿孔切割。

Application: cutting, punching and engraving of various clothing fabrics and leather materials, such as: perforation and hollowing of upper leather, perforation of fitness clothes, perforation of jerseys, perforation of jackets, engraving of sportswear fabrics, cutting of lettering films and perforation and cutting of other flexible materials.

设备优势 Equipment Advantages

1. CCD视觉定位捕捉，动态加工范围，提高加工效率。
2. 机器配置高清相机，雕刻定位位置精准。
3. 使用大功率进口激光器，打标速度快，品质好，效益高。
4. 软件操作易学，减少人工操作，节约生产成本。

1. CCD visual positioning capture, dynamic processing range, improve processing efficiency.
2. The machine is equipped with a high-definition camera, and the engraving and positioning position is accurate.
3. Use high-power imported laser source, fast marking speed, good quality and high efficiency.
4. The software operation is easy to learn, reducing manual operation and saving production costs.

技术参数 / Technical Parameters

型号	CX-150SV
加工面积	600*600mm
激光类型/功率	CO ₂ 射频 150W~350W (可选)
激光管品牌	进口射频管
相机类型	工业高清相机
冷却系统	水冷系统
镭射波长	10640nm
镭射能量控制	0~100%软件控制
最小成型字元	1.8mm
最小字元间距	0.4mm
重复定位精度	<+0.01mm
支持软件格式	photoshop,Coreldraw,Autocad,Plt,AI,Bmp,Dxf,Shx,Ttf
工作电压	220V±10%, 50Hz(60Hz)
工作环境	湿度:5~95%, 温度:1~45°C
整机功率	8000W

Model	CX-150SV
Processing area	600*600mm
Laser type/power	CO ₂ RF 150W~350W (optional)
Laser tube brand	Imported RF tube
Camera type	Industrial HD Camera
Cooling system	Water cooling system
Laser wavelength	10640nm
Laser energy control	0~100% software control
Minimum character	1.8mm
Minimum character spacing	0.4mm
Repeat positioning accuracy	<+0.01mm
Supported software formats	Photoshop,Coreldraw,Autocad,Plt,AI,Bmp,Dxf,Shx,Ttf
Working voltage	220V±10%, 50Hz(60Hz)
Working environment	Humidity: 5~95%, Temperature: 1~45°C
Total power	8000W

样品展示 / Sample show



鞋材画线下料一体机

Automatic Laser Drawing and Cutting Machine



智能画线+下料 提高的不仅仅是效率
Automatic Laser Drawing And Cutting Improving more than efficiency



CW/P-1615TTF
量产机型
Mass Production Machine

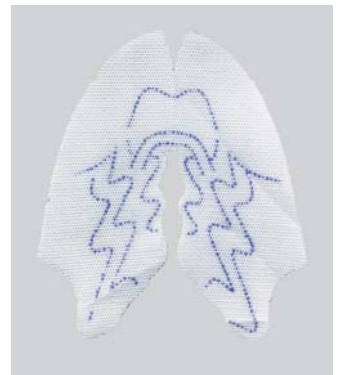
设备优势 Equipment Advantages

1. 用于取代人工画线及丝网印刷等传统制鞋工艺,一机顶5-10人。
2. 全自动边画线边下料,省网板、省工序、省刀模费、省布料。
3. 多种油墨可供选择,可节省80%以上的油墨,画线合格率 $\geq 99.99\%$,画线精度高。
4. 自动上下料更方便更高效,比传统下料节省 $\geq 7\%$ 的材料。

1. It is used to replace traditional shoemaking techniques such as manual line drawing and screen printing, and one machine can save 5-10 employees.
2. It is automatic drawing lines while cutting, saving printing board, working procedures, mold cost, and fabrics.
3. A variety of inks are available, which can save more than 80% of the ink, the line-drawing pass rate is over 99.99%, and the line-drawing accuracy is high.
4. Automatic feeding is more convenient and efficient, saving over 7% material than traditional.



可根据客户实际使用环境量身定制机型,满足更多需求。
Customized models according to the diverse needs of customers.





创轩创造 六大优势保障

Chanxan Machine Six advantages Quality Assurance



- 1. 创轩定制高速喷头**
Chanxan customized high-speed drawing heads

» 画线清晰, 运行稳定, 适用所有墨水。
Clear lines, stable working, suitable for all inks.
- 2. 创轩喷切互补组合式设计**
Chanxan drawing and cutting complementary design

» 边划线边切割, 确保效率大幅提升。
Drawing while cutting, ensuring a significant increase in efficiency.
- 3. 创轩开发软件控制系统**
Software made in Chanxan

» 稳定性好, 功能完善, 简单易学。
Good stability, perfect function, easy to learn.
- 4. 创轩定制多进多出冷水机**
Special chiller made in Chanxan

» 安全守护, 占地空间小。
Safety guarding, occupying a small space.
- 5. 创轩定制激光电源**
Chanxan customized laser power supply

» 为机器持续高强度工作保驾护航。
Escort the continuous high-intensity work of the machine.
- 6. 创轩定制激光发生器**
Chanxan customized laser generator

» 光斑模式好, 稳定耐用, 行业率先实行一年质保。
Good spot pattern, stable and durable, take the leading position in industry with one-year warranty.

为什么选择我们?

Why choose us

优势对比 Contrast

机器操作
Machine operation

传统手工
Traditional operation



VS



自动画线速度 ≥ 20 双/min
Automatic drawing speed ≥ 20 pairs/min
双头画线, 四头切割, 效率高
Double heads line drawing, four heads cutting, high efficiency
自动画线合格率 ≥ 99.99%
Automatic line drawing pass rate ≥ 99.99%
可十几种图形一次性完成
More than a dozen graphics can be completed at one time
超高安全性, 无工伤事故
Ultra-high safety, no work-related accidents

速度
效率
合格率
图形
安全性

手工画线速度 ≤ 5 双/min
Manual line drawing speed ≤ 5 pairs/min
手工裁剪画线, 速度较慢
Manually cut and draw lines, slower speed
手工画线合格率 ≤ 90%
Qualification rate of manual line drawing ≤ 90%
单一性图形画线
Singularity graphic drawing
易发生安全问题
Prone to safety issues

鞋材画线切割一体机六大优势

Six advantages of shoe material Automatic Laser Drawing And Cutting Machine.

- 1 工序减少, 节省人工**
Process reduction and labor saving

使画线和下料为一体, 有效减少搬运成本, 节约生产空间。一机顶 5-10 人, 支持电脑导图, 操作简单。
Integrating line drawing and blanking, effectively reduce handling costs and save production space. One machine can replace 5 to 10 workers, supports computer input, easy to operate.
- 2 画线精度高**
High precision of line drawing

画线精度高, 合格率 ≥ 99.99%, 不受材料, 款式限制。
The drawing precision is high, the pass rate is over 99.99%, and it is not restricted by materials and styles.
- 3 节省网板**
Save stencil

取代人工画线及丝网印刷, 均匀高速喷射, 节省 80% 以上的油墨。
Instead of manual line drawing and screen printing, uniform high-speed jetting, saving 80% of ink.
- 4 效率高**
High efficiency

全自动边画边切, 两头喷墨先行画线, 四头高速切割, 省工序, 省刀模费, 省布料。
Automatic drawing and cutting, two-head inkjet drawing firstly, four-head high-speed cutting, saving process, saving mold cost, saving fabric.
- 5 节省原料**
Save raw materials

自动上下料更方便, 更高效, 比传统下料节省 ≥ 7% 的材料。
Automatic loading and unloading are more convenient and efficient, and it can save about 7% of material compared with traditional blanking.
- 6 节省刀模**
Save mould

无需刀模, 电脑排版, 随时调取, 无限次重复使用。
No need die, computer typesetting, recall at any time, unlimited repeated use.



我们部分合作伙伴 / Our Partners Show

(排名不分先后 names not listed in order)



科研院所 / Research Institutes

(排名不分先后 names not listed in order)

